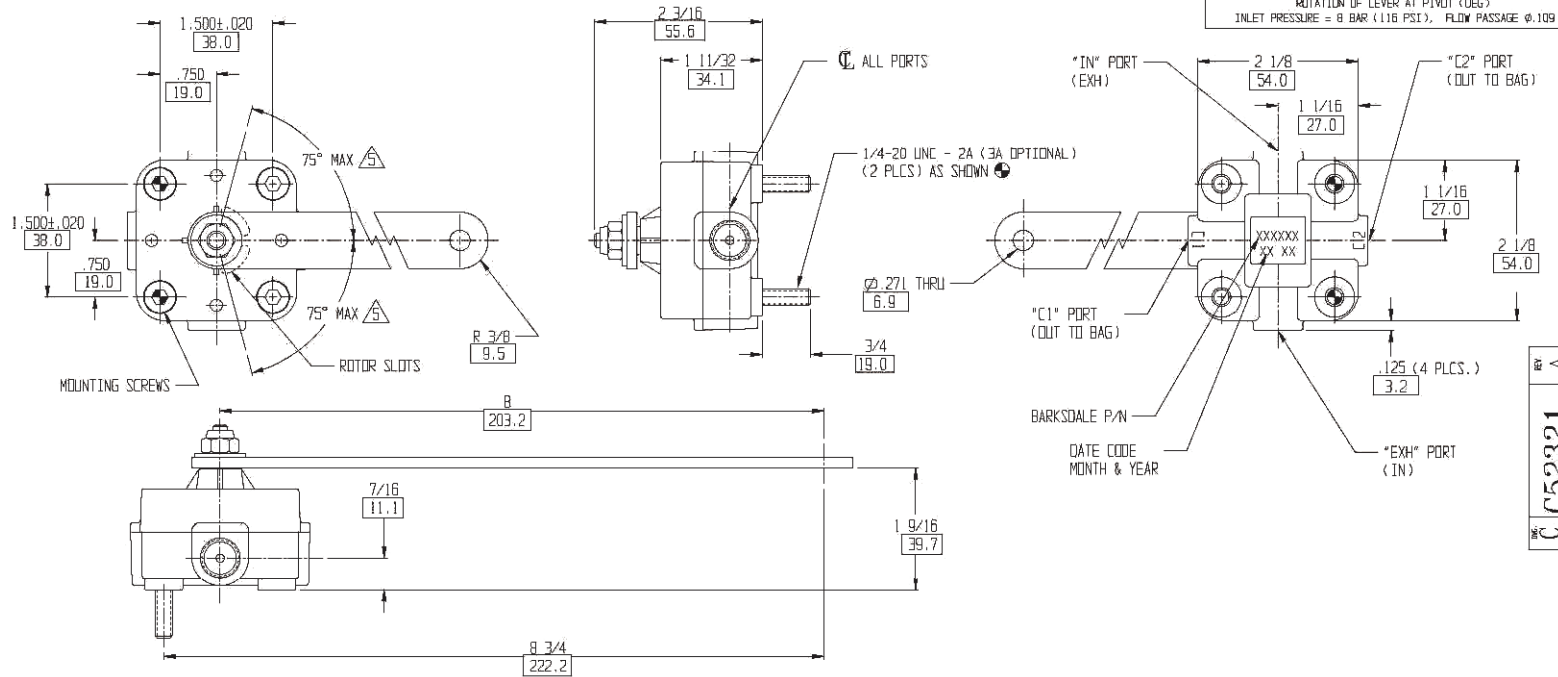
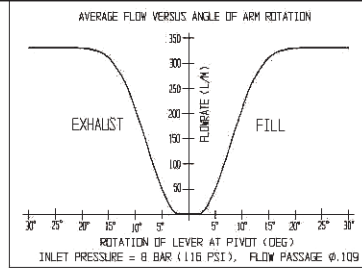
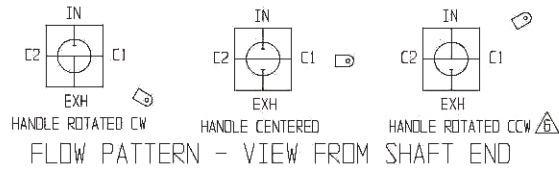


RELEASE NUMBER	REV LTR	REVISION DESCRIPTION	BY	DATE	APPD
	A	INITIAL RELEASE	ERS	11/18/99	RJT
59366-1	B	ADDED PICTORIAL REFERENCE	JDA	02/24/05	MIG
P32207-C9	C	REDRAWN WITH CORRECT VENDOR INFO	JEB	08/07/09	JPD
P32207-D5	D	52321-Q197 WAS 52321-Q97	JJW	11/24/09	JPD

- MATERIAL: BARKSDALE PART # 52321-Q197 D
- SIMILAR TO P/N 16-14530-000

ITEM NUMBER TBB61310455	DESCRIPTION HEIGHT CONTROL VALVE	DAIMLER		Daimler Trucks North America			
		THE INFORMATION CONTAINED HEREIN IS PROPRIETARY DATA, AND IS NOT FOR DISSEMINATION OR DISCLOSURE, IN WHOLE OR IN PART, FOR ANY PURPOSE OTHER THAN THAT FOR WHICH IT IS SUBMITTED, EXCEPT AS AUTHORIZED IN WRITING BY DAIMLER TRUCKS NORTH AMERICA LLC (DTNA)					
		MATERIAL APPROVAL	DATE	UNLESS OTHERWISE NOTED, DIMENSIONS AND TOLERANCES ARE DEFINED ACCORDING TO ASME Y14.5M- 1994, WITH EXCEPTION PER DTNA 09ENG-WI037		THIRD ANGLE PROJECTION	UNITS OF MEASURE MM
		X.XXX	XX/XX/XX				
		DRAWN BY	DATE				
		ERS	11/18/99				
		CHECKED BY	DATE				
		RJT	11/18/99				
		RESPONSIBLE ENGINEER	DATE				
		ERS	XX/XX/XX				
APPROVED BY	DATE						
X.XXX	XX/XX/XX						
DESCRIPTION HEIGHT CONTROL VALVE							
SUPPLEMENTAL DESCRIPTION 99801							
ITEM/DRAWING NUMBER TBB61310455				REVISION LETTER D	PAGE 1 of 2		



- 8. MAXIMUM PERMISSIBLE LEAKAGE IS LESS THAN .04 CU IN/MIN AT 80 PSI
- 7. "IN" PORT MAY BE "EXH" PORT AND "EXH" PORT MAY BE "IN" PORT
- 6. BOXED DIMENSIONS ARE IN MILLIMETERS
- 5. MAXIMUM HANDLE ROTATION FOR FILL OR DUMP IS 75°. HANDLE MAY BE ROTATED 180°
- 4. TEMPERATURE RATING: -35°F TO +150°F, (-37°C TO +65°C)
- 3. MATERIALS OF CONSTRUCTION: BODY, ROTOR: ANODIZED ALUMINUM. HOUSING: ENGINEERED STRUCTURAL POLYMER, O-RINGS: BUNA N. PRESSURE SEALS: CORROSION RESISTANT STEEL, SHAFT: LEADED STEEL NICKEL PLATED
- 2. NOMINAL DEAD BAND IS 1.5° TO EITHER SIDE OF VALVE CENTER LINE. MAXIMUM TOTAL DEAD BAND IS 4° AND MAY BE LOCATED ALL TO ONE SIDE OF VALVE CENTER LINE.
- 1. PORTING: ALL PORTS 1/4 NPT., FLOW PASSAGE .109 (2.7 MM)

NOTES:

REV A
C52321

DESIGN CHECKED	DATE	NEW ASSEMBLY	
GREG B.	10-01-99	UNIVERSAL SUSPENSION VALVE 120 PSI, 1/4 NPT ALL PORTS	C981207
APPROVED	DATE	REFERENCE DRN	DET.
T.L.	10-01-99	DPM 4200.035	<input type="checkbox"/> Over
UNLESS OTHERWISE SPECIFIED		WEIGHT	SCALE
OPERATIONAL TOLERANCES		11 OZ	FULL C
FRACTIONAL 1/16		SIZE	OF
DECIMAL ±.010		C52321	
ANGULAR ± 5°		REV A	
DIMENSIONS IN BOXES ARE IN MILLIMETERS		DATE	
		08-29-00	